

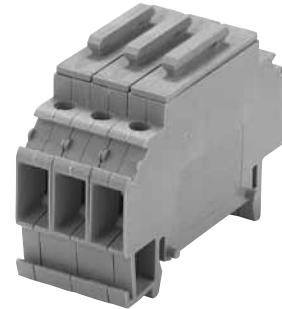
# DIN Rail Terminal Blocks

## MIKSI5

### 8 mm - 300 Volts AC/DC

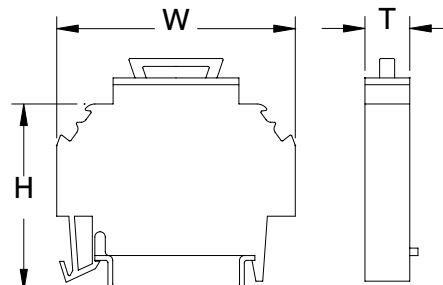
#### Specifications:

- Insulating Material, Nylon 6/6, Gray
- Wire Range #10-#20 AWG – 10 Amps
- VDE - 4 mm<sup>2</sup>
- IEC - 6.3 Amps
- UL Recognized File No. IZLT2.E35113 – 10 Amps
- Fuse Type - 5 x 20 mm, 5 x 25 mm
- **CE**
- RoHS Compliant



MIKSI5

Catalog #	Description
MIKSI5	Center Section
MN35-2	DIN Rail symmetrical 35 X 7.5 mm slotted 2 m long, steel zinc-plated
MIW50	Insulating partition walls for visual and electrical separation of terminal groups
MSK35	End bracket used on both ends of the assembly to hold blocks in place



Dimensions:  
 H = 47 mm (1.850")  
 W = 60 mm (2.362")  
 T = 8 mm (.315")

## MIKE4, MIKE10, MIKE16

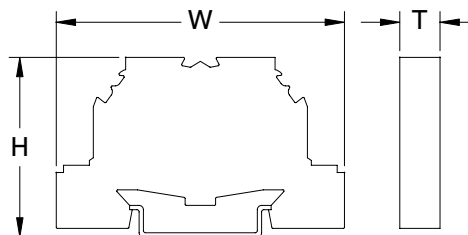
### 7 mm, 8 mm, 10 mm

#### Specifications:

- Insulating Material, Nylon 6/6, Green/Yellow
- Wire Range:  
 MIKE4 - #10-#22 AWG  
 MIKE10 - #8 AWG  
 MIKE16 - #6 AWG
- UL Recognized File No. XCFR2.E62806
- CSA Certified File No. LR700930
- VDE
- **CE**
- RoHS Compliant



MIKE10



Dimensions:  
 H = MIKE4 38 mm (1.496")  
       MIKE10 44 mm (1.771")  
       MIKE16 44 mm (1.732")  
 W = 56 mm (2.204")  
 T = MIKE4 7 mm (.275")  
       MIKE10 8 mm (.315")  
       MIKE16 10 mm (.394")

For electronic drawings or 2D/3D CAD data, send request to [drawings@marathonsp.com](mailto:drawings@marathonsp.com)