

# Product Data Sheet



## 671 GP XX 3765

Replace "XX" with 01 through 30 for number of poles

Terminal Block— Closed Back  
With Sems Pressure Saddle Screw  
20 Amps, 250 Volts (AC/DC)



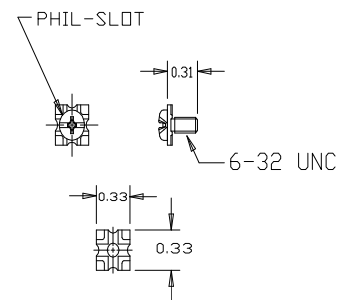
### Copper Stranded Wire only.

Wire Range with Wire Binding Screw: #12 - #22 AWG

7/16" Centers

Application torque: 12 in. lbs

(6 Pole shown)



### Electrical Ratings:

- 20A with Listed ring lug or unprepared wire, (Based on NEC Table 310-16, 75°C columns)
- 250 Volts AC/DC (UL 1059 Class B, User Group – Commercial Appliances)
- Short Circuit Current Rating: 10,000A (Default)
- Approved for Factory and Field Wiring.

### Mechanical Ratings:

- Storage and transportation temperature range: -35 °C to 110 °C (-31 °F to 230 °F)\*
  - Maximum insulator base temperature: 150 °C (302 °F)\* UL RTI
  - Flammability rating of insulator base: UL 94V-1
- \* Use outside these ratings needs to be judged in the end-use application.

### Materials:

- Connector (Contact): Brass, tin plated.
- Insulator base: Phenolic
- Drive screw (Rivet): Stainless steel
- Screw, #6-32 Saddle Plate, Phil-Slot: Steel, nickel plated

### Agency Approvals:

- UL Recognized, UL 1059 Terminal Block Standard, File No. XCFR2.E62806
- CSA Certified, CSA C22.2 No. 158, File No. LR19766

- CE compliant, IEC 60947-7-1
- RoHS Compliant

## Wire Range:

Wire Size	Torque	Copper Wire Stranding Classes - Number of Strands		
		Solid	Class B	Class C
12	12 in. Lbs		7	19
14	12 in. Lbs		7	19
16	12 in. Lbs		7	19
18	12 in. Lbs		7	19
20	12 in. Lbs		7	19
22	12 in. Lbs		7	19

Suggested product mounting hardware: #6 fastener, torque to 10-15 in. lbs.

## ACCESSORIES:

- Printing (for printing options, see Terminal Block Printing on website)

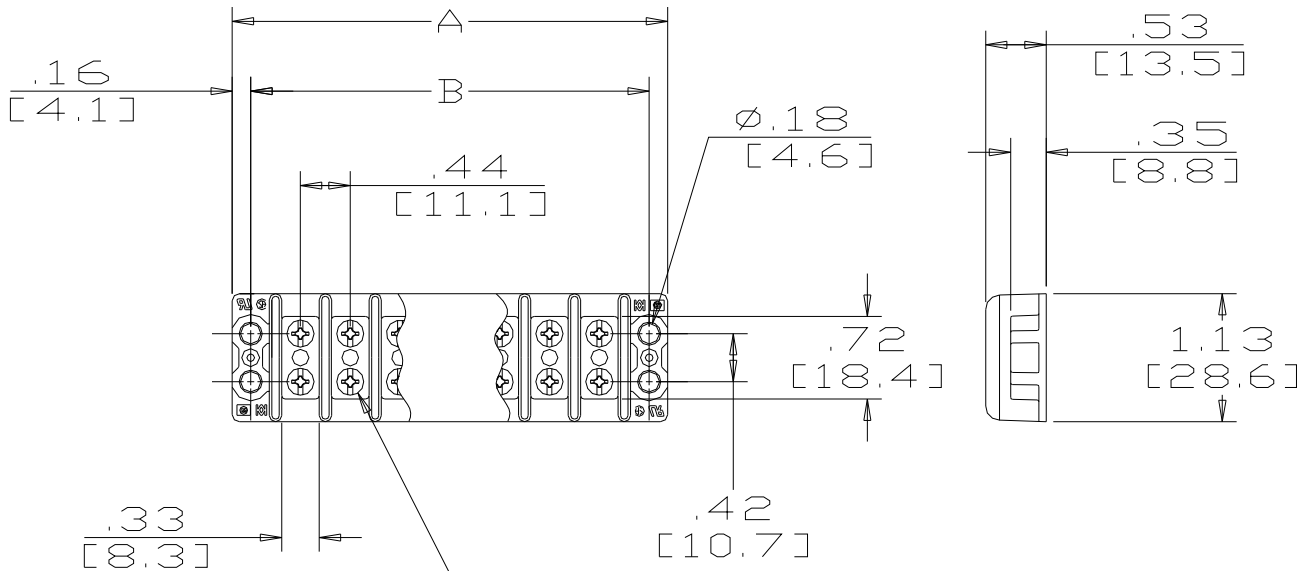
- Marking strips - sub mounted, black only (FB) (For Printing Options, see section on website)



- Marking strips – top mounted, white only (SW)

- Cover – top mounted. Order CW (white) or CB (Black). Can be printed. See website.





Catalog No	# of Poles	Dimensions			X	Catalog No	Catalog No	# of Poles	Dimensions	
		A	B	A					B	
671 GP 01	1	1.19	0.88	X	216	671 GP 16	16	7.75	7.44	
671 GP 02	2	1.62	1.31	X	217	671 GP 17	17	8.19	7.88	
671 GP 03	3	2.06	1.75	X	218	671 GP 18	18	8.62	8.31	
671 GP 04	4	2.50	2.19	X	219	671 GP 19	19	9.06	8.75	
671 GP 05	5	2.94	2.63	X	220	671 GP 20	20	9.50	9.19	
671 GP 06	6	3.37	3.06	X	221	671 GP 21	21	9.93	9.62	
671 GP 07	7	3.81	3.50	X	222	671 GP 22	22	10.37	10.06	
671 GP 08	8	4.25	3.94	X	223	671 GP 23	23	10.81	10.50	
671 GP 09	9	4.68	4.37	X	224	671 GP 24	24	11.24	10.93	
671 GP 10	10	5.12	4.81	X	225	671 GP 25	25	11.68	11.37	
671 GP 11	11	5.56	5.25	X	226	671 GP 26	26	12.12	11.81	
671 GP 12	12	5.99	5.68	X	227	671 GP 27	27	12.55	12.24	
671 GP 13	13	6.43	6.12	X	228	671 GP 28	28	12.99	12.68	
671 GP 14	14	6.87	6.56	X	229	671 GP 29	29	13.43	13.12	
671 GP 15	15	7.31	7.00	X	230	671 GP 30	30	13.86	13.55	

MM = Dim X 25.4

[WWW.MARATHONSP.COM](http://WWW.MARATHONSP.COM)  
1-419-352-8441